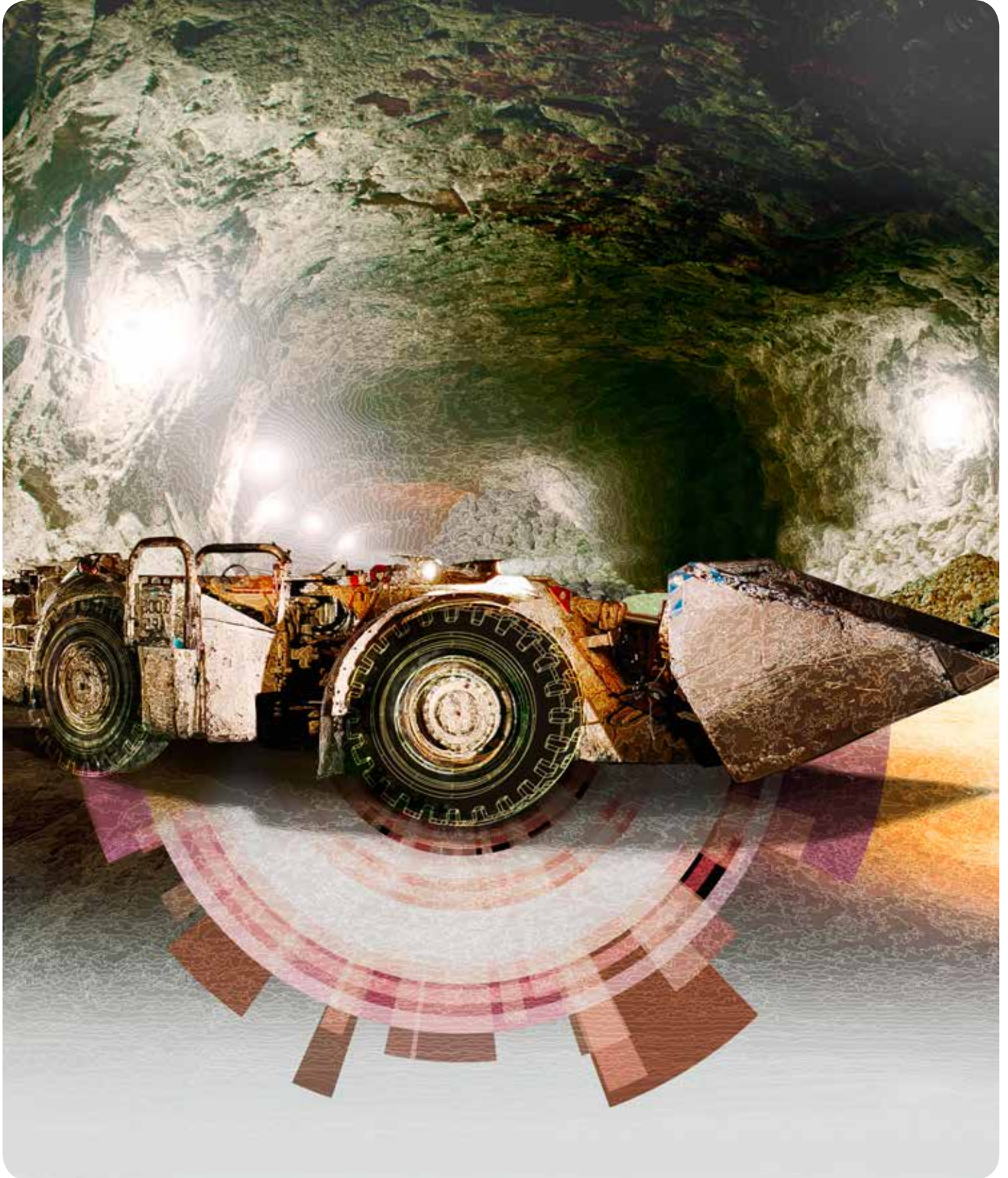
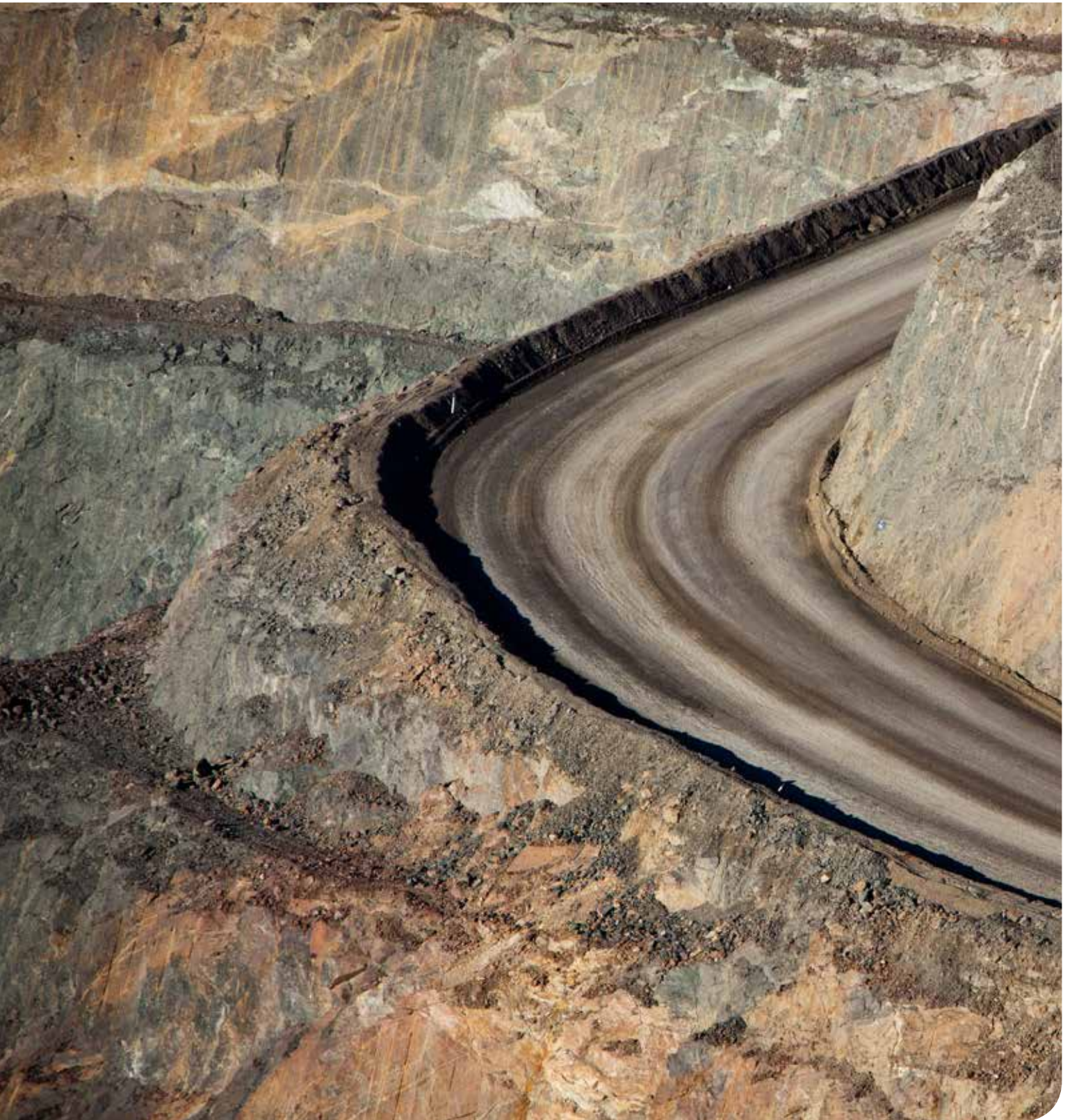


BRIDGESTONE

The premium tyre range for Underground Mining








Robust, reliable performance

FROM THE GROUND UP

Whatever the surface, whatever the purpose, Bridgestone's premium line-up of Off-The-Road tyres for underground mining operations is built to last - and perform - in the toughest terrain. Offering superior traction, high stability and exceptional cut resistance, you can count on Bridgestone for tyres that really go the distance.

RECOMMENDATION FOR EACH APPLICATION

	VCH	VCHS	VSNT	VSNL	VSDT	VSDL	VSMS
 Articulated Dump Trucks for Underground			✓	✓	✓	■	
 Load Haul Dumps				✓		✓	✓
 Drilling Jumbo	✓	✓				■	✓

✓ = *Applicable*

■ = *Possible to fit*

For your best tyre choice, consult your Bridgestone representative.

Underground Mining - Tyre overview



Pattern	VCH	VCHS	VSNT	VSNL	VSDT
	V-steel Container Handler	V-steel Container Handler Stability & Safety	V-steel N-Traction L4	V-Steel N-Lug L4	V-steel Super Deep Traction L5
Description	<ul style="list-style-type: none"> • Exceptional life and superior cut resistance. • Low negative ratio of this pattern provides a strong resistance to irregular wear. 	<ul style="list-style-type: none"> • Safe and stable operations due to its newly developed all steel radial casing. • Unique pattern is designed for longer tread life by preventing irregular wear. 	<ul style="list-style-type: none"> • Deep tread tyre suitable for tough and rocky operation. • Optimum traction without compromising the tread life and the riding comfort. 	<ul style="list-style-type: none"> • Designed for underground mining, also suitable for wheel loaders working in open pits and quarries. • Rock pattern design offers outstanding traction, stability and comfort. • Sidewall protectors reduce cuts and other damages. 	<ul style="list-style-type: none"> • Extra-deep tread for excellent traction, comfortable ride, superior cut resistance and long tread life. • High traction level even when it is 75% worn.
Tread Depth	Standard	Deep	Deep	Deep	Extra-Deep
Surface			Traction	Rock	Traction
Recommended ground surface					
8.25 R15					
10.00 R15					
14.5 R15					
9.00 R20					
12.00 R20	***	***			
14.00 R20				**	
12.00 R24	**	**			
14.00 R24	***	***			
17.5 R25					
18.00 R25					
20.5 R25					
23.5 R25					**
26.5 R25			**		**
29.5 R25			**		**
29.5 R29			**		**
35/65 R33			*****	**	**

* 4 star rating for Shuttle truck service, 2 star rating for Load Haul Dump service.



VSDL	VSDR	VSMS	Pattern	DL	STMS
V-steel D-Lug L5	V-steel Super Deep Rock L5	V-steel Smooth Tread-MS L5S		D-Lug L5	Smooth Tread-MS L5S
<ul style="list-style-type: none"> • Extra deep tread designed for severe and rocky surfaces. • Good traction, stability and a comfortable ride. • Specially designed sidewall provides extended protection from cutting. 	<ul style="list-style-type: none"> • Extra deep rigid pattern for the most extreme operations. • The high-volume, long-life tread and superior construction result in superior cut resistance and long tyre-life. • Specially designed sidewall provides extended protection from cutting. 	<ul style="list-style-type: none"> • Smooth extra deep tread tyre designed for operations on severe rocky surfaces. • Its special compound ensures a maximum resistance to cutting & wearing. Protection from cutting. 	Description	<ul style="list-style-type: none"> • Extra deep tread designed for severe rocky surfaces. It offers good traction and stability, very high resistance to cutting. 	<ul style="list-style-type: none"> • Smooth extra deep tread tyre designed for operations on severe rocky surfaces. • Its special compound ensures a maximum resistance to cutting & wearing.
Extra-Deep	Extra-Deep	Extra-Deep	Tread Depth	Extra-Deep	Extra-Deep
Rock	Rock	Smooth	Surface	Rock	Smooth
			Recommended ground surface		
**					
**					
**					
**		**			
**		**			
**		**	12.00-24		20
**		***	14.00-24		20
**		**	17.5-25	16	20
**		**	18.00-25		32
**	**		20.5-25	16	
**			23.5-25	20	
**		**	26.5-25	26	
**			29.5-25	28	36
**		**	29.5-29		34
**			35/65-33	42	
**			40/65-39	56	

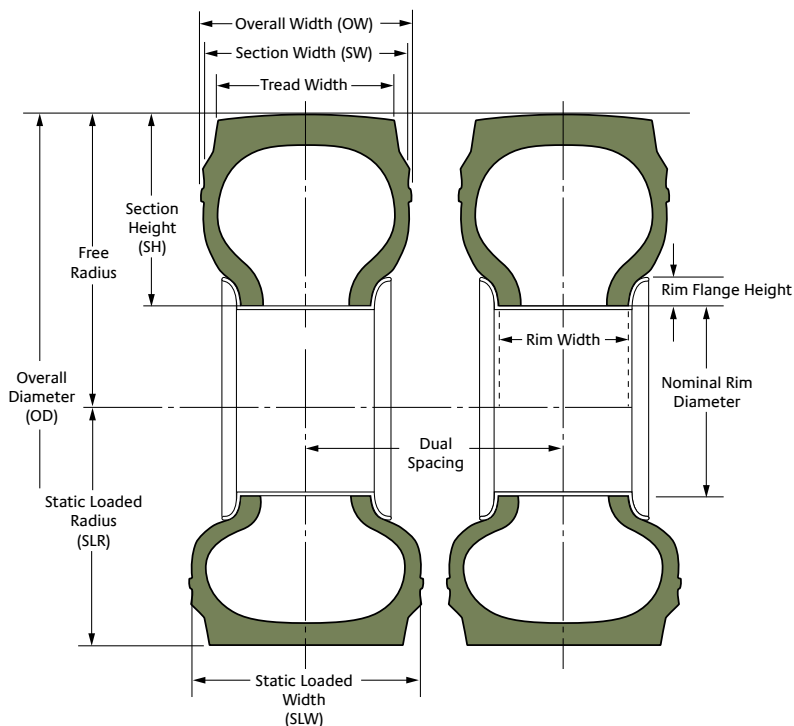
Underground Mining - Tyre Line-up

Tyre size	Pattern	Star rating	Type	TRA code	Approximate Inflated Dimensions								OTD	Recommended Rim / Flange Height (inch)
					OD		OW		SLR		SLW			
					mm	inch	mm	inch	mm	inch	mm	inch	mm	
15"														
8.25 R15	VSDL	★★	T/T	L5	880	34,6	248	9,8	405	15,9	285	11,2	48	6.50T
10.00 R15	VSDL	★★	T/T	L5	905	35,6	287	11,3	416	16,4	330	13	48	7.50V
14.5 R15	VSDL	★★	T/L	L5	899	35,4	359	14,1	413	16,3	412	16,2	48	11.00/1.5
20"														
9.00 R20	VSMS	★★	T/T	L5S	1054	41,5	260	10,2	474	18,7	303	11,9	51	7.00T
12.00 R20	VCH	★★★	T/T		1140	44,9	315	12,4	512	20,2	360	14,2	29,5	8.50V
	VCHS	★★★	T/T		1139	44,8	297	11,7	507	20	355	14	41,5	8.50V
	VSDL	★★	T/T	L5	1168	46	320	12,6	538	21,2	359	14,1	57	8.50V
	VSMS	★★	T/T	L5S	1173	43,2	312	12,3	540	21,3	351	13,8	57	8.50V
14.00 R20	VSNL	★★	T/T	L4	1196	47,1	360	14,2	550	21,7	414	16,3	34	10.00WI
24"														
12.00-24	STMS	20	T/T	L5S	1275	50,2	321	12,6	606	23,9	339	13,3	55	8.5, 8.50V
	STMS	20	T/T	L5S	1373	54,1	367	14,4	646	25,4	391	15,4	78	10.00W
12.00 R24	VCH	★★	T/T		1254	49,4	323	12,7	558	22	376	14,8	29,5	8.50V
	VCHS		T/T		1263	49,7	310	12,2	580	12,2	351	13,8	42	8.50V
	VSMS	★★	T/T	L5S	1275	50,2	312	12,3	573	22,6	364	14,3	57	8.50V
14.00 R24	VCH	★★★	T/T		1393	54,8	390	15,4	610	24	460	18,1	32	10.00W
	VCHS	★★★	T/T		1412	55,6	383	15,1	626	24,6	445	17,5	63	10.00W
	VSMS	★★★	T/T	L5S	1394	54,8	390	15,4	634	25	437	17,2	72	10.00W
25"														
17.5-25	DL	16	T/L	L5	1410	55,5	445	17,5	656	25,8	470	18,5	69,5	14.00/1.5
	STMS	20	T/L	L5S	1385	54,5	450	17,7	645	25,4	462	18,2	30,5	14.00/1.5
17.5 R25	VSDL	★★	T/L	L5	1400	55,1	440	17,3	639	25,2	495	19,5	68	14.00/1.5
	VSMS	★★	T/L	L5S	1374	54,1	440	17,3	623	24,5	487	19,2	68,5	14.00/1.5
18.00-25	STMS	32	T/L	L5S	1675	65,9	520	20,5	762	30	550	21,7	84	13.00/2.5
18.00 R25	VSMS	★★	T/L	L5S	1675	65,9	512	20,2	733	28,9	592	23,3	84,5	13.00/2.5
20.5-25	DL	16	T/L	L5	1558	61,3	548	21,6	714	28,1	570	22,4	79,5	17.00/1.7
20.5 R25	VSDL	★★	T/L	L5	1552	61,1	531	20,9	702	27,6	600	23,6	78	17.00/2.0
	VSDR	★★	T/L	L5	1552	61,1	531	20,9	702	27,6	600	23,6	78	17.00/2.0
23.5-25	DL	20	T/L	L5	1673	63,3	618	24,3	682	26,9	688	27,1	43	19.50/2.5
23.5 R25	VSDT	★★	T/L	L5	1660	65,4	621	24,4	745	29,3	680	26,8	79	19.50/2.5
	VSDL	★★	T/L	L5	1672	65,8	613	24,1	755	29,7	677	26,7	87	19.50/2.5
26.5-25	DL	26	T/L	L5	1798	70,8	694	27,3	820	32,3	726	28,6	97	22.00/3.0
	STMS	36	T/L	L5S	1798	70,8	680	26,8	827	32,6	719	28,3	95	22.00/3.0
26.5 R25	VSNT	MS/★★	T/L	L4	1779	70	685	27	799	31,5	740	29,1	57,5	22.00/3.0
	VSDT	★★	T/L	L5	1775	69,9	697	27,4	790	31,1	778	30,6	88	22.00/3.0
	VSDL	★★	T/L	L5	1790	70,5	684	26,9	797	31,4	761	30	95,5	22.00/3.0
	VSMS	★★	T/L	L5S	1775	69,9	684	26,9	800	31,5	760	29,9	95	22.00/3.0
29.5-25	DL	28	T/L	L5	1900	74,8	768	30,2	873	34,4	805	31,7	105,5	22.00/3.0

Tyre size	Pattern	Star rating	Type	TRA code	Approximate Inflated Dimensions								OTD	Recommended Rim/Flange Height (inch)
					OD		OW		SLR		SLW			
					mm	inch	mm	inch	mm	inch	mm	inch	mm	
29.5 R25	VSNT	MS/★★	T/L	L4	1905	75	768	30,2	849	33,4	835	32,9	60	25.00/3.5
	VSDT	★★	T/L	L5	1903	74,9	779	30,7	845	33,3	869	34,2	96	25.00/3.5
	VSDL	★★	T/L	L5	1925	75,8	766	30,2	855	33,7	846	33,3	104	25.00/3.5
29"														
29.5-29	STMS	34	T/L	L5S	2009	79,1	749	29,5	931	36,7	792	31,2	103	25.00/3.5
29.5 R29	VSNT	MS/★★	T/L	L4	2000	78,7	774	30,5	905	35,6	849	34,6	60	25.00/3.5
	VSDT	★★	T/L	L5	1989	78,3	779	30,7	883	34,8	872	34,3	96	25.00/3.5
	VSDL	★★	T/L	L5	2008	79,1	776	30,6	900	35,4	856	33,7	104,5	25.00/3.5
	VSMS	★★	T/L	L5S	2008	79,1	773	30,4	912	35,9	829	32,6	104,5	25.00/3.5
33"														
35/65-33	DL	42	T/L	L5	2075	81,7	896	35,3	979	38,5	945	37,2	97	28.00/3.5
35/65 R33	VSNT	MT*	T/L	L4	2075	81,7	904	35,6	936	36,9	976	38,4	62,5	28.00/3.5
	VSDT	★★	T/L	L5	2075	81,7	890	35	914	36	990	39	96	28.00/3.5
	VSDL	★★	T/L	L5	2075	81,7	880	34,6	917	36,1	951	37,4	95	28.00/3.5
39"														
40/65-39	DL	56	T/L	L5	2420	95,3	1020	40,2	1112	43,8	1070	42,1	106,5	32.00/4.0

*MT: 4 star rating for Shuttle truck service, 2 star rating for Load Haul Dump service.

GRAPHICAL ILLUSTRATION OF THE APPROXIMATE INFLATED DIMENSIONS





BRIDGESTONE EUROPE NV/SA
Kleine Kloosterstraat 10 - 1932 Zaventem - Belgium
www.bridgestone.eu



The information contained in this publication is for guidance purpose only. Whilst every effort has been taken in its production, no responsibility can be accepted for any loss or damage arising from any kind of undetected technical or commercial error contained in the brochure. Any data supplied in this publication is subject to possible revision following the date of publication. Due to the constant advance of tyre technology, the contents of this publication are subject to change without notice. Printed by Unides • BS OTR BSEU - 03/15 - 1003706