

Power through snow and ice
with the high-traction,
all-season off-the-road tyre.

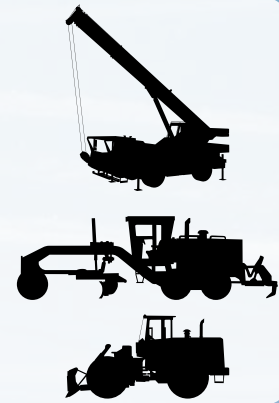
VSW: V-STEEL SNOW WEDGE



VSW: V-STEEL SNOW WEDGE

Welcome to the VSW V-Steel Snow Wedge, the first snow radial tyre of its kind developed for snowploughs and loaders operating in extreme Nordic conditions. Incorporating the latest materials and tread technology, the VSW is optimised for year-round use, eliminating the need for rotating tyres in the summer.

- Outstanding traction, even from a standing start, on ice, fresh and compacted snow and asphalt
- Superior cornering power and braking response in all conditions
- Optimised, all-season compound for year-round use



OUTSTANDING WINTER PERFORMANCE



Superior traction

The VSW's state-of-the-art tread pattern maximises both lateral and longitudinal grip on snow and ice for reliable braking, acceleration and manoeuvring, even in the most challenging Nordic conditions.

Exceptional stability

The VSW's wide contact patch delivers genuine stability while distributing contact pressure more evenly to minimise surface damage.

Outstanding rigidity and reliability

The VSW's all-season compound makes it suitable for use in snow-removal work and other communal services all year round.

AVAILABLE TYRE SIZES

Size	Application	Star rating	Type	REC Rim/FL height	Approximate Inflated Dimensions								OTD
					OD		OW		SLR		SLW		
					mm	inch	mm	inch	mm	inch	mm	inch	
14.00 R24 TG	Loader	1	T/L	8.00 TG	1351	53.2	370	14.6	594	23.4	426	16.8	23.5
14.00 R24 TG	Grader	3	T/L	10.00 VA	1351	53.2	390	15.4	594	23.4	446	17.6	23.5
16.00 R24 TG	Grader	1	T/L	10.00 VA	1485	58.5	417	16.4	680	26.8	467	18.4	22.5
385/95 R25 170E/F	Mobile Crane		T/L	10.00/1.5	1355	53.3	394	15.5	631	24.8	427	16.8	23.5
445/95 R25 177E/174F	Mobile Crane		T/L	11.25/2.0	1484	58.4	435	17.1	695	27.4	476	18.7	23.0
17.5 R25	Grader/Loader	1	T/L	14.00/1.5	1340	52.8	440	17.3	597	23.5	480	18.9	27.0
20.5 R25	Earthmover/Loader	MS	T/L	17.00 AL/1.7 17.00/2.0	1470	57.9	530	20.9	640	25.2	603	23.7	30.5
23.5 R25	Earthmover/Loader	MS	T/L	19.50/2.5	1596	62.8	620	24.4	692	27.2	689	27.1	31.5
600/65 R25	Loader	1	T/L	17.00/1.7 17.00/2.0	1424	56.0	600	23.6	627	24.7	678	26.7	31.5